

# YEAR EIGHT'S RELIGIOUS EDUCATION HOMEWORK PROJECT

(LOWER N-3)

LOOKING AT OUR  
ENVIRONMENT AND  
HOW WE USE IT



Officially this is the lower level and is the basic extended learning project. It may be done any way you wish.

IF YOU ARE A PARENT WORKING WITH A CHILD AT AROUND THE LOWER LEVELS THEN I THANK YOU FOR WORKING WITH US AND SUGGEST THAT YOU DO THREE POSTERS ON DIFFERENT ANIMALS THAT WE NEED TO SAVE OR CONSERVE. IF YOU WANT TO LOOK AT WORK ON THE VLE THERE IS FUN WORK THERE AS WELL AS THIS HOMEWORK. (All of which we will put on a memory stick if you ask)

# YEAR EIGHT'S R.E. HOMEWORK PROJECT IS:

LOOKING AT OUR ENVIRONMENT AND  
HOW WE USE IT



FIRST, IF YOU ARE AIMING FOR A  
LEVEL THREE MAKE CERTAIN  
YOU HAVE DONE THE  
QUESTIONS AND PICTURES  
ABOUT "THE LORD'S MY  
SHEPHERD".

**REMEMBER TO CHECK YOUR R.E. LEVELS TO ENSURE YOU AIM HIGH ENOUGH**

# **YEAR EIGHT'S RELIGIOUS EDUCATION**

## **A STUDY OF OUR ENVIRONMENT**

### **WHAT TO DO NEXT:**

- **Think about our environment and things that get hurt or destroyed such as the tigers, seals, trees etc.**
- **Do a poster to stop it.**
- **Try to do a leaflet which shows why we need to protect our environment.**
- **You are to do this work as if it's a project and can write as much as you like as long as you hand in at least three pages.**

**If you use the computer make certain you save it to the HANDING IN POINT**

**See your teacher if you need to.**

**REMEMBER YOU CAN DO ALL OF THIS WORK ON PAPER AND THEN HAND IT IN.**

## THE LORD'S MY SHEPHERD

This is part of a psalm or poem that comes from the time of King David.

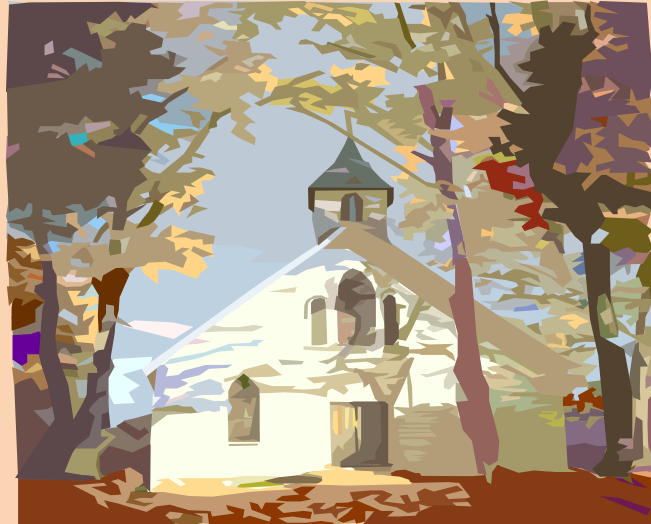
The English words used are from the time of King James, but even then it was a bit old fashioned.

We have kept it just because it is the famous version and sounds really nice.

*The Lord's my shepherd. I shall not want.*

*He maketh me to lie down in green pastures; he leadeth me beside the still waters.*

*He restoreth my soul; he leadeth me in the paths of righteousness for his name's sake.*



This is Part of Religious Education work for every-one

It is based on Psalm 23

Do this work on paper and hand it in to your teacher

TRY THESE TASKS:

1. What is a shepherd?
2. Why do you think the poet used the word shepherd?
3. What do you think a "green pasture" would look like?
4. What do you think a soul is?
5. Do you think you have one?

EXTRA WORK FOR ALL TO TRY....

FIRST - SEE IF YOU CAN FIND THE END PART OF THE PSALM/POEM.

THEN- SEE IF YOU CAN DO DRAWINGS OR FIND PICTURES TO GO WITH IT.