

YEAR EIGHT'S RELIGIOUS EDUCATION EXTENDED LEARNING PROJECT

(HIGHER 5-8)

LOOKING AT OUR ENVIRONMENT AND HOW WE USE IT



This work allows you to reach further than the general extended learning project and may be done any way you wish, but at this level we are looking for work that could be used to teach others so it is easiest to reach the highest level if you use power-point, although that is not the only way. HERE WE EXPECT YOU TO PRODUCE WORK RANGING FROM L5 TO L8 BUT WE CAN RECORD AN EXCEPTIONAL LEVEL IF YOU DO EVEN BETTER AS WELL AS RECORD LOWER IF YOU DO NOT RELATE IT TO MORALS OR RELIGION

YEAR EIGHT'S RELIGIOUS EDUCATION HOMEWORK PROJECT IS:

LOOKING AT OUR ENVIRONMENT AND HOW WE USE IT



- All students must do the work on Psalm 23.
- You must decide on an environmental issue which is having an effect on the planet and produce a poster and leaflet about that issue.
- You must also research people's views of the environment and how they express it through the written word and poetry. Either do a poem yourself or copy and comment on a famous one
- At this higher level students will have produced all of the above but will have chosen their issues with care and reached Level 5 or Level 6 discussing the issues in detail and relating them to religious or moral themes using their own arguments to teach others.**
- To reach an exceptional level or to produce work worth extra credit, students may also produce posters or power-points that would encourage other students and act as an example of outstanding work that can go on display or be used in assembly.**

YEAR EIGHT'S RELIGIOUS EDUCATION

A STUDY OF OUR ENVIRONMENT

IDEAS:

- *W.H.Davies' poem that begins "What is this life, if full of care..." is a good one to illustrate , to paraphrase and to explain although there are thousands to choose from*
- *The school's library as well as branches of the county's library all contain leaflets and information on the activities of environmental charities*
- *Any web search will give lots of information on environmental charities, the difficulty is in deciding which ones to chose . You need to explain why you decided on the one you did.*
- *Remember you are aiming to write about environmental pressure groups that have a moral or religious view point so if you are searching the internet be careful what words you enter into the search box*
- *Finally any power-point you do to reach the highest levels must be persuasive as well as factual.*



THE LORD'S MY SHEPHERD

This is part of a psalm or poem that comes from the time of King David.

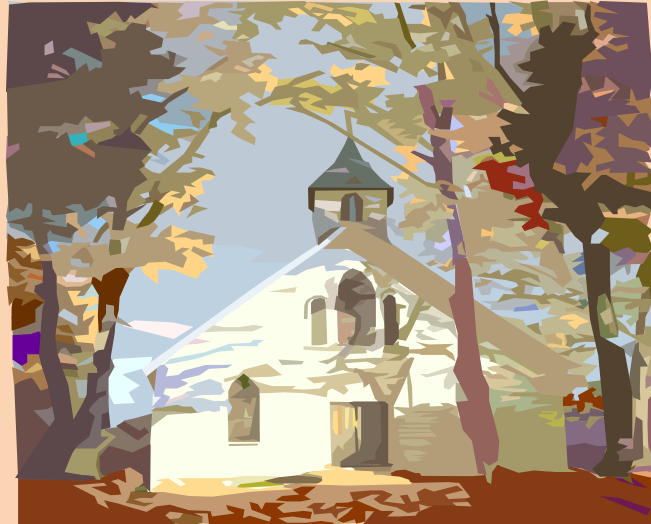
The English words used are from the time of King James, but even then it was a bit old fashioned.

We have kept it just because it is the famous version and sounds really nice.

The Lord's my shepherd. I shall not want.

He maketh me to lie down in green pastures; he leadeth me beside the still waters.

He restoreth my soul; he leadeth me in the paths of righteousness for his name's sake.



This is Part of Religious Education work for every-one

It is based on Psalm 23

Do this work on paper and hand it in to your teacher

TRY THESE TASKS:

1. What is a shepherd?
2. Why do you think the poet used the word shepherd?
3. What do you think a "green pasture" would look like?
4. What do you think a soul is?
5. Do you think you have one?

EXTRA WORK FOR ALL TO TRY....

FIRST - SEE IF YOU CAN FIND THE END PART OF THE PSALM/POEM.

THEN- SEE IF YOU CAN DO DRAWINGS OR FIND PICTURES TO GO WITH IT.